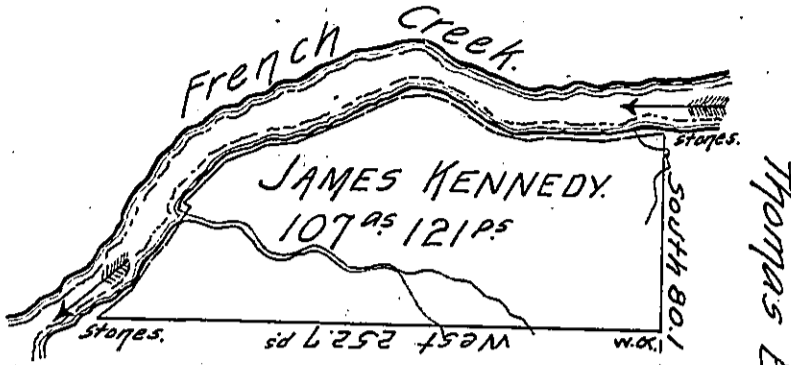


*Courses and Distances up French Creek
beginning at Stores.*

- N. 52 1/2° E. 24.
- N. 29° E. 13.6
- N. 37 3/4° E. 8.8
- N. 30° E. 9.7
- N. 32 1/2° E. 8.4
- N. 52° W. 2.8
- N. 42 1/2° E. 33.3
- N. 73° E. 8.4
- N. 79 3/4° E. 14.
- N. 66 1/2° E. 31.
- N. 60 1/2° E. 15.
- N. 88° E. 11.8
- S. 73° E. 7.9
- S. 57 1/2° E. 10.7
- S. 50° E. 10.
- S. 63° E. 8.
- S. 68 1/2° E. 10.2
- S. 84° E. 15.
- N. 83° E. 6.
- S. 86 1/2° E. 26.8
- N. 82° E. 28.5



Arthur Mc Gill

Thomas Barton

In pursuance of a Warrant for 150 Acres of Land dated the 16th day of February 1802, was surveyed the 24th day of June 1802, for James Kennedy the above described Tract of land, containing 107 Acres, 121 perches, and allowance of six per Cent for Roads &c. Situate in Rockdale Township, Crawford County.

William McArthur, D. S.

*To Samuel Cochran, Esquire,
Surveyor General.*

IN TESTIMONY that the above is a copy of the original remaining on file in the Department of Internal Affairs of Pennsylvania, made conformably to an Act of Assembly approved the 16th day of February, 1833, I have hereunto set my Hand and caused the Seal of said Department to be affixed at Harrisburg, this twenty-eighth day of AUGUST 1905.

Joseph A. ...
Secretary of Internal Affairs.